

SERVICE INSTRUCTIONS MST MODEL 8023301 ADJUSTABLE ELECTRONIC LOW PRESSURE WARNING SYSTEM

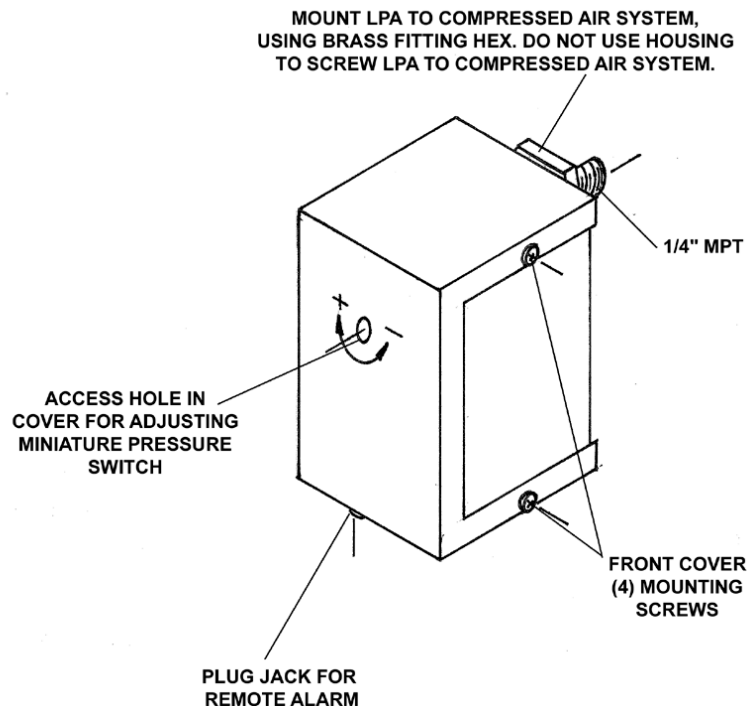
The MST Model 8023301 Electronic Low Pressure Warning System is designed to alert users that the incoming air pressure has decreased below a specified minimum value (to be determined according to customer's requirements).

The system consists of a miniature adjustable pressure switch connected to a battery operated external remote alarm. The pressure switch is field adjustable to meet the pressure required by customer's application.

The general operation of Model 8023301 Electronic Low Pressure Warning System (LPA) is as follows: When the line pressure falls below the LPA's set pressure level, the pressure switch connects the internal 9 volt transistor battery to the remote external alarm (rated at 119 dB(A)). Until the pressure in the system exceeds the set level, the alarm will continue to operate (battery life will be greatly reduced if this condition is allowed to persist longer than a few minutes).

To properly operate the system, it is recommended to install a regulator ahead of LPA and a gauge after the LPA to allow customer to set the pressure and also to test alarm system and battery.

To check Alarm System and Alarm Battery, regulate air pressure down below alarm pressure setting and plug the Remote Alarm into LPA's alarm jack. If Remote Alarm does not work, check battery (to replace battery - see following). After this initial test, unplug Remote Alarm, adjust back to line pressure and plug Remote Alarm into alarm jack. The system should now be fully operational and whenever the line pressure falls below the specified value, the Remote Alarm will be energized.



ALARM BATTERY REPLACEMENT (SEE FIGURE NO. 1)

To replace the battery in the MST 8023301 Low Pressure Warning System, carefully remove the front cover from the main body of alarm system (NOTE: front cover held onto main body by (4) self-tapping screws located on either side of main body). CAUTION: DO NOT ATTEMPT TO TURN OR PLACE ANY EXCESS FORCE ON THE LOW PRESSURE WARNING SYSTEM. ATTEMPTING TO TWIST THE HOUSING COULD POSSIBLY DAMAGE THE INTERIOR COMPONENTS!

In removing cover assembly, make sure not to place any excess strain on the internal wiring. Remove the internal battery and replace with a new battery of equivalent type. Place the cover over the main alarm housing assembly being careful not to cut or pinch any of the wires, and slide in place. Test the system as noted previously (plug remote alarm system into unit without any pressure applied). If Remote Alarm does not work, check that the fresh battery was installed correctly, and all wires are intact. Contact your local distributor, or MST if you have any problems or cannot get the system to operate properly after performing the above checks.

The battery in this system should be replaced annually, unless frequent alarming has occurred. Always test warning system prior to use to assure that the system is operating properly.

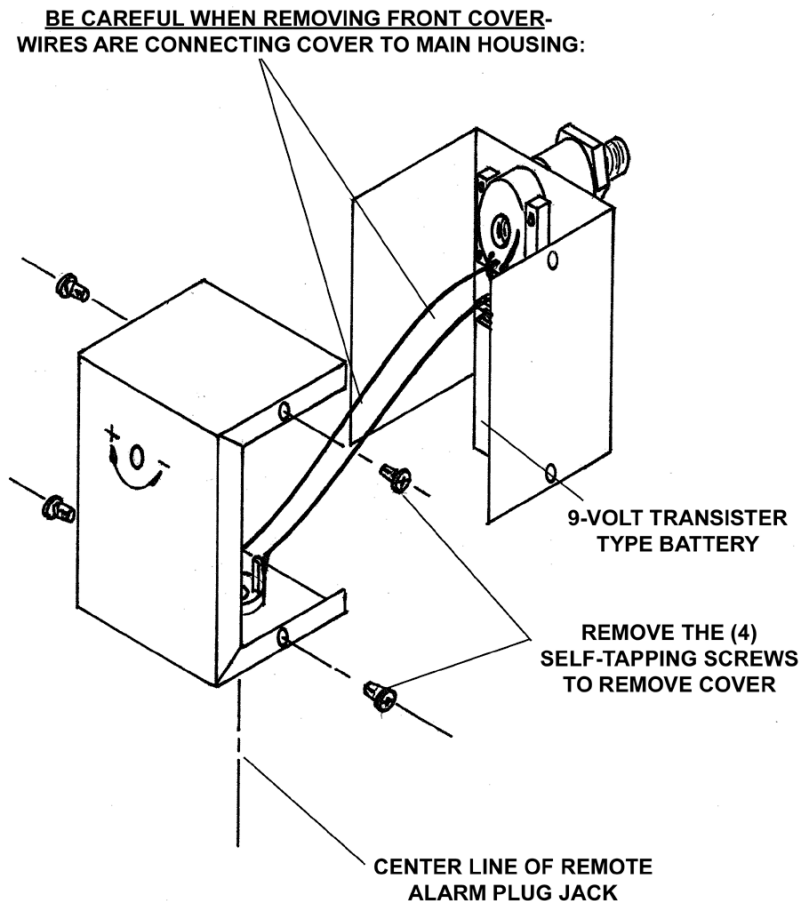
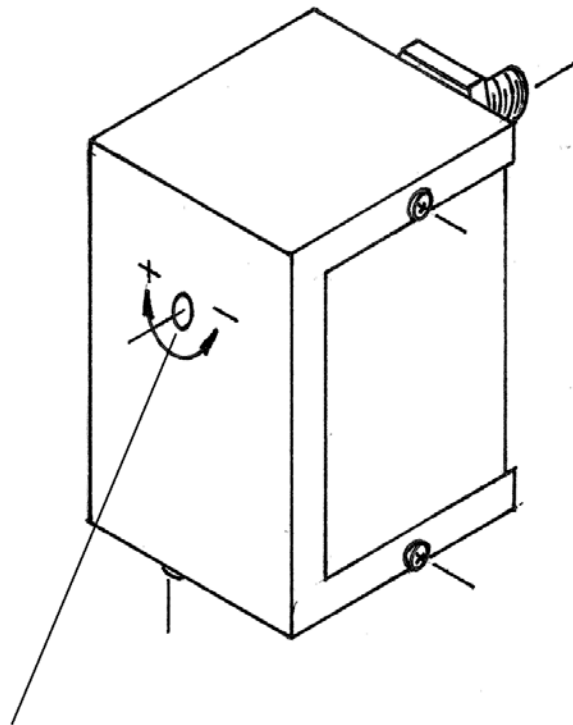


Figure No. 1

ADJUSTABLE PRESSURE SWITCH ALARM SETTING INSTRUCTIONS

- A) We suggest installing a regulator ahead of LPA and a pressure gauge following LPA for pressure setting reference.
- B) Remove the LPA cover (as described -See Figure 1).
- C) Determine the minimum pressure required. Pressurize air line above the factory setting of 80 PSIG to keep alarm system de-energized when the Remote Alarm is plugged into LPA.
- D) In setting pressure switch, any minimum pressure setting above the factory setting of 80 PSIG will require a clockwise rotation of the pressure adjustment screw to energize alarm system.
- E) After alarm set, re-check alarm system.



**ACCESS HOLE TO MINIATURE PRESSURE SWITCH
ADJUSTMENT SCREW. USE 1/8" ALLEN WRENCH
TO SET PRESSURE.**

GENERAL SPECIFICATIONS

ADJUSTABLE PRESSURE RANGE	25 TO 110 PSIG
MAXIMUM PRESSURE	300 PSIG
POWER REQUIRED	INTERNAL 9 VOLT DC TRANSISTOR BATTERY (EVEREADY NO. 522 OR EQUIVALENT)
AUDIBLE ALARM SOUND PRESSURE VS. VOLTAGE	+114 dB@ +5 VDC +122 dB@ +9 VDC +125 dB@ +12 VDC
POWER CORD	20 FT., 18 AWG/2C, SPT-1, VW-1, 221 [°] F (105 [°] C)
FACTORY PRESSURE SETTING	80 PSIG
OPTIONAL	UP TO 250FT.OFCORD CAN BE SUPPLIED

MST, INC. SHALL NOT BE LIABLE FOR ANY INJURY, LOSS, OR DAMAGE, DIRECT OR CONSEQUENTIAL, ARISING OUT TO THE USE OF OR THE INABILITY TO USE THIS PRODUCT, BEYOND THE REPLACEMENT OF DEFECTIVE MATERIALS OR WORKMANSHIP. USERS OF SUPPLIED AIR RESPIRATORS SHOULD EVALUATE THEIR OWN PARTICULAR APPLICATION AND PERFORM THEIR OWN TEST FOR AIR QUALITY AND/OR QUANTITY TO DETERMINE THE SUITABILITY FOR USE OF THIS PRODUCT.

For further information or questions about service or maintenance car of this device, contact your local distributor, or MST, Inc. at (800) 542-6646.

NOTE: MST® RESERVES THE RIGHT TO CHANGE OR MODIFY SPECIFICATIONS AND/OR PRODUCTS.